



National Forest  
Foundation

---

2021 Annual Report



**Board of Directors  
Executive Committee**

**Chair – Rob Leary**

Former CEO, The Olayan Group (FL)

**Vice Chair – Bob Wheeler**

President & CEO, Airstream Inc. (OH)

**Treasurer – Lee Fromson**

COO & CFO Simms Fishing Products (MT)

**Secretary – Timothy P. Schieffelin**

President, P.O.V., LLC (CT)

**Caroline Choi**, Senior Vice President,  
Corporate Affairs, Southern California  
Edison (CA)

**Patricia Hayling Price**, President,  
LiveWorkStrategize, LLC (NY)

**Allie Kline** (CO)

**Board of Directors**

**Matt Boss**, EVP, Head of Consumer Product,  
TD Bank (NJ)

**Mike Brown, Jr.**, Founder and Managing  
Partner, Bowery Capital (NY)

**Mary Kate Buckley**, President, Jackson Hole  
Mountain Resort (WY)

**Aimée Christensen**, Founder & CEO,  
Christensen Global Strategies; Founder &  
Executive Director, Sun Valley Institute (ID)

**James K. Hunt**, Non-Executive Chairman,  
Tournament Capital Advisors, LLC, Hunt  
Companies, Inc. (WY)

**Janice Innis-Thompson**, Attorney/Senior  
Vice President Litigation and Legal  
Operations, Nationwide Mutual Insurance  
Company (OH)

**Toren Kutnick**, Vice President, Dale Kutnick  
& Laura Gordon Kutnick Foundation (CT)

**Andie MacDowell**, Actress & Spokesperson (CA)

**Thomas McHenry**, President & Dean,  
Vermont Law School (VT)

**Jose Minaya**, Chief Executive Officer,  
Nuveen (NC)

**Randy Moore**, Ex-Officio, Chief, USDA Forest  
Service (DC)

**Kevin Murphy**, President, ExxonMobil  
Foundation; Manager, Corporate Citizenship  
and Community Investments, Exxon Mobil  
Corporation (TX)

**Jeff Nuss**, Senior Advisor & Impact Investor,  
Founder & Former CEO, GreenWood  
Resources, Inc. (OR)

**James O'Donnell**, President-Mountain  
Division, Vail Resorts, Inc (CO)

**Randy Peterson**, Principal, LRP Consultants,  
LLC (WI)

**Rick Wade**, Senior Vice President,  
Department Strategic Alliance & Outreach,  
U.S. Chamber of Commerce (DC)

**Hugh Wiley** (CT)

Board List Current as of 8/26/22

Thanks to supporters like you, the National Forest Foundation had another year of growth that helps us work with our many partners to create more resilient ecosystems while welcoming new and more diverse audiences to the wonder and awe of the National Forest System.

This annual report is coming to you a little later than usual this year. Regardless, we hope you find the information interesting and enjoyable.

For those who can access and experience it, the outdoors continues to be a renewed or newfound haven from the continuing impact of COVID-19. As the world continues to emerge from the pandemic, the outdoors still provides an outlet to help focus on our mental and physical wellbeing while enjoying activities with our friends and families.

There is always so much that we can highlight in our annual reports, and never enough space to cover everything you help us accomplish. In this report, you will read about two of our summer jobs programs that build stewardship skills while improving National Forests and Grasslands.

Working across boundaries, the Mission Mountain Youth Crew works and learns with the Forest Service and the Confederated Salish & Kootenai Tribes in Montana. And in Colorado's Gunnison County, the Sustainable Tourism and Outdoor Recreation (STOR) Corps learns stewardship skills that are eligible to receive undergraduate credits from Western Colorado University. We are grateful for their interest in and work to benefit the National Forest System.

You will also read about our work restoring recreational use cabins on the Tongass and Chugach National Forests in Alaska. Our work on Tahoe National Forest in California is helping to restore forest resiliency while continuing to collaboratively plan landscape-scale work across boundaries.

Our campaign to plant 50 million trees on National Forests continues to progress at a good pace. We hope you enjoy reading about our work on the Hiawatha National Forest in Michigan that is helping to increase habitat for the Kirtland's warbler, a rare North American songbird.

As our organization continues to grow, our Board and staff also took the time to complete an ambitious new strategic plan that will guide our growth and enable us to support our public lands more than ever before.

Please enjoy this annual report for our 2021 fiscal year and know that each of you played a role in our accomplishments. We are grateful to you for helping us improve America's incredible National Forests and Grasslands.

Sincerely,



Mary Mitsos  
NFF President & CEO



Rob Leary  
NFF Board Chair

# 2021 Project Spotlights



## Tree Planting on a Great Lakes National Forest

Michigan's Hiawatha National Forest straddles against three Great Lakes, creating unique habitat and weather conditions that can quickly change. In 2021, the NFF's reforestation program planted 644,900 seedlings across numerous project sites on the Hiawatha. Crews planted a mix of native conifer species to support multiple habitat and restoration objectives. The trees will help restore native habitat that was once planted to a monoculture in the early twentieth century, provide streambank stability and riparian shade, and increase habitat for one of North America's rarest songbirds, the Kirtland's warbler. In total, the project planted seedlings across nearly 2,000 acres of this Great Lakes National Forest.

## Lake Tahoe West Restoration Partnership

The NFF leads the collaborative Lake Tahoe West Restoration Partnership to protect communities and restore ecological and climate resilience at Lake Tahoe. In 2021, the NFF completed forest thinning and meadow restoration on 242 acres near communities. We provided facilitation support toward environmental analysis of additional, comprehensive restoration treatments across the 60,000-acre landscape, and we entered a Master Stewardship Agreement with the Forest Service to implement future work. We commissioned artist Todd Gilens to install an interactive artwork called Reading Forest at Taylor Creek Visitor Center, engaging the public with ideas about forest management and climate resilience.



## Mission Mountains Youth Crew

The Mission Mountains Youth Crew, a summer job program, exposes high school-age youth living on the Flathead Reservation in Western Montana to career pathways in natural resources and helps build a bridge to college. In the 2021 pilot year, the crew worked for seven weeks, completing stewardship activities on ancestral lands of the Salish and Pend d'Oreille in the Mission Mountains, which today are managed on one side by the Flathead National Forest and on the other by the Confederated Salish & Kootenai Tribes (CSKT). Working cross boundary, crew members learned from Forest Service and CSKT specialists representing diverse disciplines, including aquatics, wildlife, heritage, and recreation.



# 2021 Project Spotlights



## Restoring Cabins in Alaska

The Tongass and Chugach National Forests in Alaska, our nation's largest National Forests, offer amazing sights to see and explore: temperate rainforests, mountains, tidewater glaciers, bears, whales, salmon, and more. Many areas of these Forests are remote and rugged. Luckily, the Forest Service has cabins available for the public to rent allowing for safe exploration of these areas. Over the past three years, the NFF has restored 10 cabins that have fallen into disrepair. In 2021, we restored the Kanga Bay Cabin on the Tongass and built a brand new cabin at Goose Bay on the Chugach. Our work on the public cabins will ensure visitors will be able to enjoy Alaska's wild places for years to come.

## Wood for Life Tribal Fuelwood Initiative

In Northern Arizona we continued to build the Wood for Life partnership in 2021, connecting small diameter timber from forest restoration projects with Navajo and Hopi communities who need firewood. With the closure of a coal-fired power plant and coal mine, the inexpensive heating source for many was lost. The partnership has delivered over 2,000 cords of firewood from forest restoration projects to elders and families. Together, we're working to sustainably meet Tribal fuelwood needs and enhance our ability to conduct restoration projects across the region. In the year ahead, we are working to expand the program to New Mexico and Colorado.

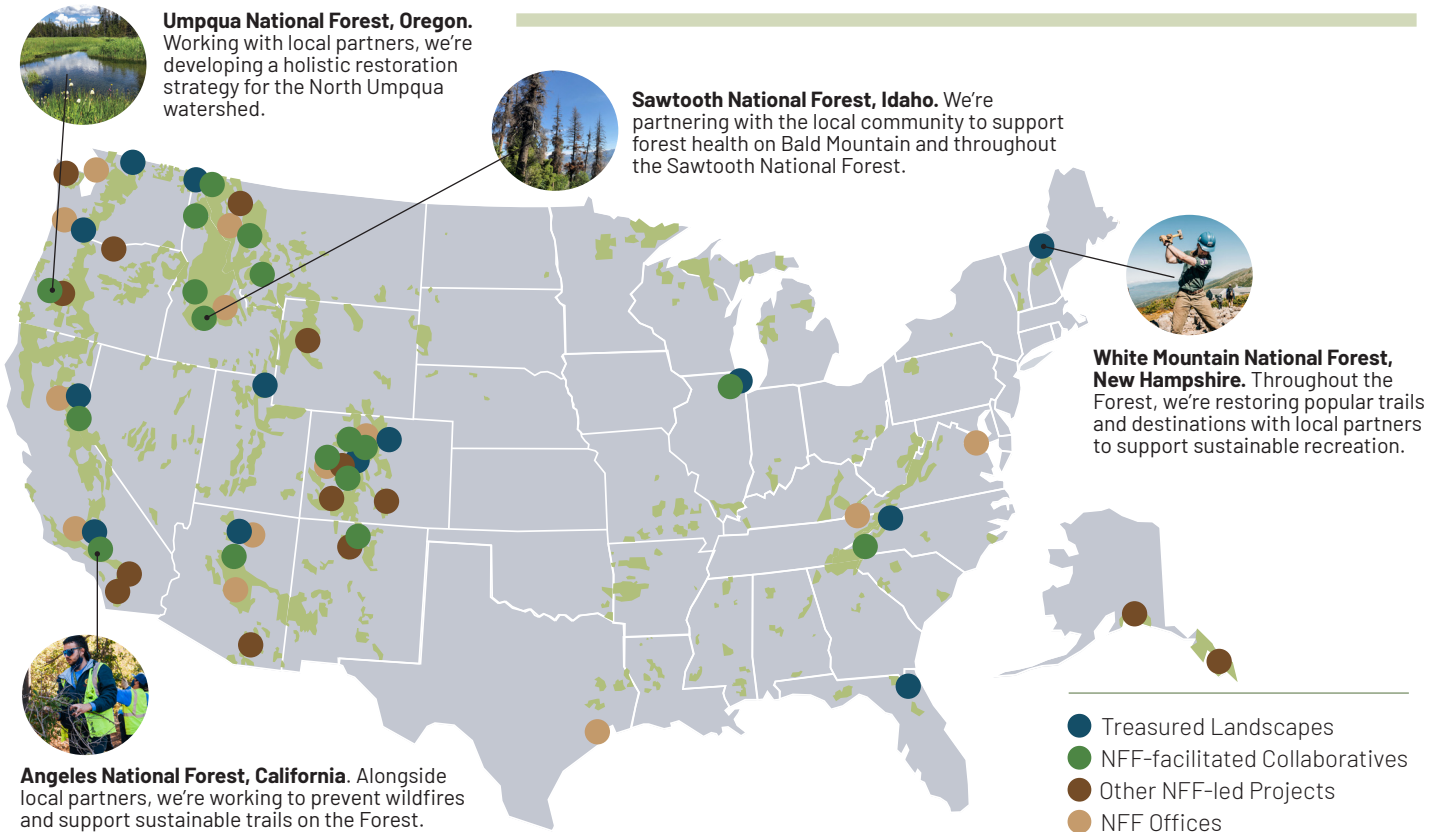


## STOR Corps Supports Colorado Community

Since 2020, the Sustainable Tourism and Outdoor Recreation (STOR) Corps has positively impacted public lands in Colorado's Gunnison Valley. In 2021, the STOR Corps maintained trails, improved wildlife habitat, planted trees, and talked with thousands of visitors about responsible recreation and a new camping management system. The 14 STOR Corps members who have finished the program earned a living wage and were eligible to receive undergraduate credits from Western Colorado University. They left the program with a hands-on natural resources management skillset. We're excited to continue the STOR Corps in 2022 while envisioning how we can expand this next-generation model in the future.



# 2021 Projects



## Statement of Activities

Year Ended September 30, 2021

### Support and Revenue

Foundations .....	\$2,285,375
Corporations .....	\$10,169,656
Individuals .....	\$4,067,825
In-Kind .....	\$221,775
US Government Grants.....	\$3,058,641
State and Local Government Grants .....	\$2,873,368
Special Events .....	\$314,897
Contracts and Reimbursable Grants .....	\$10,860,117
Other Income .....	\$57,734
Investment Gain (Loss).....	\$1,004,883

**Total Support and Revenue..... \$34,914,271**

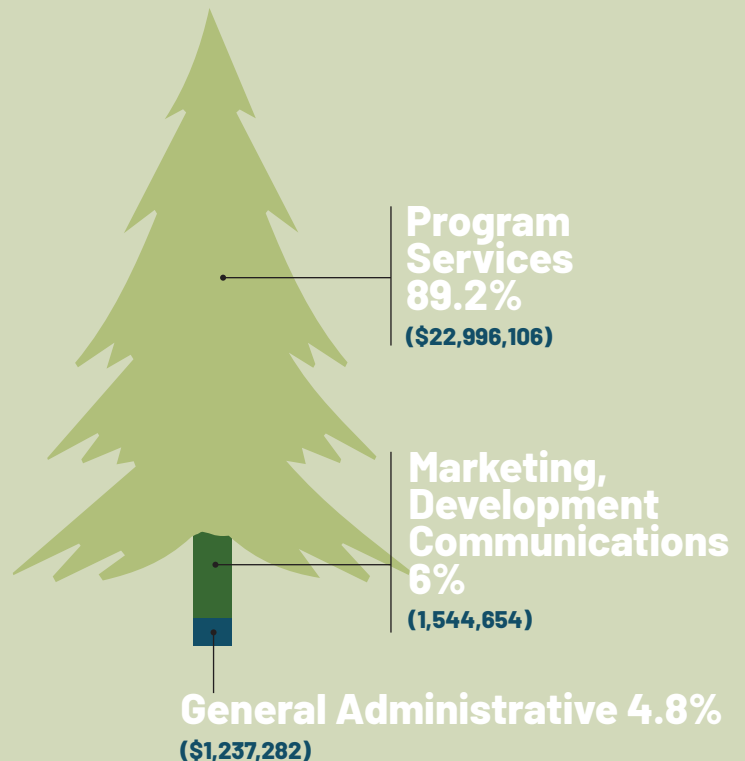
### Expenses

Program Services .....	\$22,996,106
Marketing, Development and Communications.....	\$1,544,654
General and Administrative .....	\$1,237,282

**Total Expenses .....** \$25,778,042

Change in net assets .....

\$9,136,229



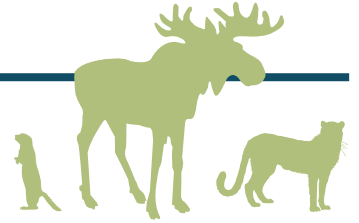


# FY2021 Conservation Results

**\$21,646,162**  
total conservation value

Collectively, the NFF issued 219 grants or contracts in FY 2021. Not including tree planting we invested \$14,233,448 in federal and private funds, which were leveraged with \$7,412,714 in partner-raised funds for a total conservation value of \$21,646,162.

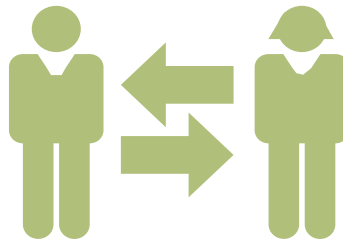
**2,883** acres of wildlife habitat restored or maintained



**1,427**  
miles of trailwork

**3,641**  
participants in peer learning sessions

12 peer learning sessions  
11 Conservation Connect Fellows



**419**  
miles of stream surveyed or restored



**9,600** acres of fuel reduction planned or completed

**1,983**  
acres of noxious weeds treated



**79,951**  
volunteer hours

5,853 volunteers 2,224 youth employed or engaged



# Donors Corporations and Foundations

## \$1,000,000+

Ford Motor Company via  
the Bronco Wild Fund  
Polaris Industries, Inc.  
The Vail Corporation

## \$500,000 - \$999,999

001 Enterprises Inc.  
Ferrara Candy Company's  
Black Forest Gummies  
Southern California Edison  
Subaru of America, Inc.

## \$10,0000 - \$49,9999

Agilla Pro  
Airstream Adventures  
Arconic Foundation  
Boxed Water Is Better, LLC  
Cornelia Cogswell Rossi  
Foundation, Inc.  
Crown Family Philanthropies  
Endangered Species  
Chocolate  
First Republic Bank  
Hamill Family Foundation  
John Sperling Foundation  
Meiomi Wines  
minuteKEY  
Planet Home Lending  
REI Co-op  
Telluray Foundation  
The Martis Fund  
ThermoWorks  
Thor Industries  
Verizon Foundation  
VF Foundation

## \$50,000 - \$99,999

Arapahoe Basin Ski Area  
Blount International, Inc.  
Blue Triton  
Busch Beer  
Catena Foundation  
Edgerton Foundation  
ExxonMobil  
Filson  
Gates Family Foundation  
Harlan and Lois Anderson  
Family Foundation  
Heinz Family Foundation  
Higher Ground Sun Valley Inc.  
Jefferies Group LLC  
Kay Family Foundation  
Maison Louis Marie  
Salesforce.com  
Ski Apache  
Waste Management

## \$25,000 - \$49,999

A Living Tribute  
Airstream  
Alaska Airlines  
Copper Mountain Inc.  
Cox Enterprises  
Dr. Scholl Foundation  
Flamingo Estate  
Fortune Brands  
Gaylord & Dorothy Donnelley  
Foundation  
Gleason Leary Foundation  
Globe International  
goodr  
Gunnison Energy Corporation  
Helix  
HG Foundation  
Imperial International  
Infrastructure and Energy  
Alternatives, Inc.

Kuat Innovations LLC  
Pink Jeep Tours  
Stryker's Sustainability  
Solutions  
Tahoe Fund  
The Dale Kutnick & Laura  
Gordon Kutnick  
Foundation, Inc.  
The Keneda Fund  
The Lyda Hill Foundation  
Titan Advisors  
Tree-Nation  
UPLIFT Desk  
Wells Fargo Foundation  
Arizona

## \$10,000 - \$24,999

Alliance Corrugated Box, Inc.  
Allied Maker  
Anonymous  
Arizona Snowbowl  
Aspen Community  
Foundation  
Brentwood Home  
Brookstone Homes, LLC  
Churchill Asset Management  
LLC  
Columbia Bank  
ConocoPhillips Alaska  
Day One Perspective  
e.I.f. Cosmetics  
Earth Day Network  
Earth Echo, LLC  
EcoTek Outdoors  
Emmons Mining Company  
Equinox Foundation  
at Inland Northwest  
Community Foundation  
Ethos Veterinary Health  
Every Man Jack  
FAIRWINDS Credit Union  
Fiberon Decking  
Freeport McMoRan, Mt.  
Gipson Family Foundation  
Greenvelope  
Hecla Charitable Foundation  
Hess Winery  
Highline Industries Corp  
(Dwindle Distribution)  
Horizons Foundation  
HP, Inc.  
iGPS Logistics  
Inspire Energy Holdings  
J.W. & H.M. Goodman  
Family Foundation  
Lake Quinault Lodge  
Live Oak Brand  
MagnaFlow  
MasterBrand Cabinets  
Mizuno  
Moody's Analytics, Inc  
Novolex Holdings LLC  
P. Joseph Development  
Corporation  
Patagonia Cerveza  
Pathwater  
Phipps Reporting, Inc.  
Plant Memorial Tree  
Purgatory Resort  
Rocky Mountain Recreation  
Science Care  
Sevan Multi-Site Solutions  
Skamania Lodge  
Ski Santa Fe  
Snowbird Corporation  
Solo  
Sonepar Management US  
Southwest Airlines

Spottswode Winery  
Sterling Organization  
T-Mobile  
The Allyn Foundation, Inc.  
The DMK Foundation  
The Friese Foundation  
The Harder Foundation  
TreeNewal LLC  
UNICEF Kid Power  
UviaUs LLC  
Walrus Oil  
WAX  
Wealth Factory  
Weston Backcountry  
White & Case  
Woodchuck USA  
Xcel

## \$5,000 - \$9,999

AccountingTools, Inc.  
Arbor Bank  
atmosfair  
Better Place Forests  
Big Wood Backcountry Trails  
Blooms Today  
Collins Cockrel & Cole  
DuChateau  
Earth Class Mail  
Eleven  
Epic Adventure Maps  
Fields Pond Foundation  
Glenwood Tramway, LLC  
Gourmesso  
HRM Resources III, LLC  
Iron Mountain Hot Springs LLC  
Jackson Hole Resort  
Lodging  
JuneShine  
Kaiyo  
Kitchen Magic  
Krieger Charitable Trust  
LevGo  
Litco International Inc.  
Mars Foundation  
Net Zero Carbon  
NitroFill  
Pure Project  
Reese Cooper, Inc.  
SCP Distributors LLC  
Snowpine Lodge  
Steans Family Foundation  
Storm Guard Roofing and  
Construction  
Telluride Ski & Golf Company  
The Ruth Pruitt Phillips  
Foundation  
The Sevan Charitable  
Foundation  
The Smart Family  
Foundation of Illinois  
The Trinchera Blanca  
Foundation LLC  
Viridian Wood  
WAM Essentials  
Wolf Creek Ski Area  
ZEAL Optics

## \$2,500 - \$4,999

American Apparel  
& Footwear Association  
Arizona Community  
Foundation of Sedona  
Begonia & Bench  
Caba Design  
Edwin W. Pauley Foundation  
eegee's LLC  
Element Nutrients  
Fox Logistics

Frameology  
Gehan Homes, Ltd.  
Goldman Sachs  
GoReusable.Org  
Hobo Wine Company  
HTG Investment Advisors, Inc.  
Lexant Title  
Mack Trucks, Inc.  
Mile 26 Foundation  
MTKC  
Oakwood Veneer  
OROA USA LLC  
Osprey Packs Inc.  
Richie Graham Photography  
Sandia Laboratory Federal  
Credit Union  
SoloStove  
Studio Ma  
Sunlight Mountain Resort  
The Charles Delmar  
Foundation  
The Standair  
Tru Fit Athletic Clubs  
Wall Street Greetings, LLC  
Winter Park Resort  
Xometry, Inc.  
XTERRA Foundation

## \$1,000 - \$2,499

3Degrees Group, Inc.  
4S Bay Partners, LLC  
Advanced Biotechnologies,  
LLC  
aka Associates  
Atwood & Company  
Bear Wood Windows, Inc.  
Beaver Run Resort &  
Conference Center  
Beyond Balance  
Blue Sea Waves Foundation  
Boeing  
Brady Corporation  
Bull's Head Foundation  
Cambridge Healthcare  
Research  
Car Tots  
Coffeebar  
Continental Underwriters, Inc.  
Conway Scenic Railroad  
Crested Butte Nordic  
Daedal Earth Designs  
Deca Energy  
Dell  
Deupree Family Foundation  
Dryad Rings  
Elakai Outdoors  
Elkhart Bedding Company,  
Inc.  
Elliot Hershberg -  
Fritz and Adelaide  
Kauffmann Foundation, Inc.  
Engel & Völkers - Aspen  
Ergomart  
Feetures! brand  
Goodwood Realty  
Harvest Partners Financial  
Heal  
Healthy Directions  
Home Design by Annie  
How To Concerts LLC  
Ingrilli Citrus Inc  
J.M. Rodgers Co., INC.  
JMF Global  
Kenmark Eyewear  
Kettlehouse Brewing Co.  
Keudell/Morrison Wealth  
Management  
KINDRED SPIRITS Pet

Services  
Koukol & Associates, Inc.  
Laird Norton Family  
Foundation  
Lantower Residential  
Levitacks Certified Public  
Accountants  
Lipsev and Associates  
Loon Mountain  
Madaras Gallery, Inc.  
Maloha LLC  
Monarch Mountain  
New Leaf Detox and  
Treatment Inc.  
Northrop Grumman  
Outbound Financial  
PAPER PROJECT  
PBWS Architects  
Rapid Axis  
Rare Collectibles TV, LLC  
Rebellion Energy Services  
Operating, LLC  
Red House Architecture  
Roundup Riders of the  
Rockies Heritage and Trails  
Foundation  
Sandler O'Neill + Partners  
SequoiaCX  
Snowshoe Mountain  
StarQuest Group  
StayOver Management  
Strong Tower Consulting  
Tarbell Family Foundation  
Team Lawler Customs  
The Desert Leaf  
The von Gontard Family  
Foundation  
Timberline Lodge  
TypeHaus, Inc.  
Ultra Creative, Inc.  
WaiverSign  
Walking in Nature  
Walmart  
Wild Tribute  
Wine Nook  
Woodlake Outdoor, Inc.  
WoodZest





**National Forest Foundation**

**Statement of Activities**

**Year Ended September 30, 2021**

**(With Comparative Totals for 2020)**

	2021			2020 Total
	Without Donor Restrictions	With Donor Restrictions	Total	
Support and revenue:				
Contributions:				
Foundations	\$ 148,986	\$ 2,136,389	\$ 2,285,375	\$ 4,003,501
Corporations	1,492,732	8,676,924	10,169,656	7,133,923
Individuals	1,756,131	2,311,694	4,067,825	2,444,811
In-kind	221,775	-	221,775	209,982
Contract and reimbursable grant revenue	10,860,117	-	10,860,117	7,244,686
U.S. Government grants	3,058,641	-	3,058,641	3,023,095
State and local grants	-	2,873,368	2,873,368	596,650
Special events	314,897	-	314,897	3,000
Other income	57,734	-	57,734	17,173
Investment income, net of expenses	261,657	743,226	1,004,883	692,669
Net assets released from restrictions	6,085,505	(6,085,505)	-	-
<b>Total support and revenue</b>	<b>24,258,175</b>	<b>10,656,096</b>	<b>34,914,271</b>	<b>25,369,490</b>
Expenses:				
Program services:				
Conservation	20,771,107	-	20,771,107	15,876,091
Grants and awards	2,224,999	-	2,224,999	2,312,142
<b>Total program services</b>	<b>22,996,106</b>	<b>-</b>	<b>22,996,106</b>	<b>18,188,233</b>
Supporting services:				
General and administrative	1,237,282	-	1,237,282	937,100
Marketing, development and communications	1,544,654	-	1,544,654	1,662,970
<b>Total supporting services</b>	<b>2,781,936</b>	<b>-</b>	<b>2,781,936</b>	<b>2,600,070</b>
<b>Total expenses</b>	<b>25,778,042</b>	<b>-</b>	<b>25,778,042</b>	<b>20,788,303</b>
<b>Change in net assets</b>	<b>(1,519,867)</b>	<b>10,656,096</b>	<b>9,136,229</b>	<b>4,581,187</b>
Net assets:				
Beginning	5,559,210	18,411,904	23,971,114	19,389,927
Ending	<b>\$ 4,039,343</b>	<b>\$ 29,068,000</b>	<b>\$ 33,107,343</b>	<b>\$ 23,971,114</b>

See notes to financial statements.



**National Forest Foundation**

**Statement of Functional Expenses  
Year Ended September 30, 2021  
(With Comparative Totals for 2020)**

	2021								2020 Total
	Program Services			Supporting Services					
	Conservation	Grants and Awards	Total Program Services	General and Administrative	Development and Communications	Total Supporting Services	Total		
Salaries	\$ 2,281,257	\$ 5,904	\$ 2,287,161	\$ 475,597	\$ 691,927	\$ 1,167,524	\$ 3,454,685	\$ 3,135,390	
Fringe benefits	513,465	1,315	514,780	139,322	155,129	294,451	809,231	665,827	
Contract and professional fees	2,555,021	-	2,555,021	212,363	252,697	465,060	3,020,081	2,299,913	
Supplies	199,372	-	199,372	4,880	51,497	56,377	255,749	137,320	
Office expenses	71,667	37	71,704	11,205	145,279	156,484	228,188	222,504	
Rent and occupancy costs	38,561	89	38,650	6,673	28,819	35,492	74,142	86,545	
Equipment, equipment rental and maintenance	3,903	-	3,903	6,563	815	7,378	11,281	25,189	
Information technology	68,876	117	68,993	12,784	65,150	77,934	146,927	130,672	
Depreciation	166,014	233	166,247	12,623	19,770	32,393	198,640	415,082	
Travel	62,551	-	62,551	1,347	12,867	14,214	76,765	117,142	
Conferences and meetings	14,111	-	14,111	120	14,671	14,791	28,902	69,194	
Insurance	12,265	-	12,265	27,949	-	27,949	40,214	26,712	
Dues and staff development	8,545	-	8,545	1,998	4,188	6,186	14,731	23,423	
Advertising	11,388	-	11,388	4,195	35,743	39,938	51,326	38,398	
Miscellaneous	125,670	-	125,670	313,531	672	314,203	439,873	266,620	
Grants and sub awards	14,492,002	2,217,304	16,709,306	-	59,327	59,327	16,768,633	12,933,185	
In-kind goods and services	146,439	-	146,439	6,132	6,103	12,235	158,674	195,187	
	<b>\$ 20,771,107</b>	<b>\$ 2,224,999</b>	<b>\$ 22,996,106</b>	<b>\$ 1,237,282</b>	<b>\$ 1,544,654</b>	<b>\$ 2,781,936</b>	<b>\$ 25,778,042</b>	<b>\$ 20,788,303</b>	

See notes to financial statements.